

**www.GoCreekSideCabins.com**

Pet-Friendly  
 Hot Tubs  
 Secluded  
 WiFi  
 Furnished Kitchen  
 Call 336-246-8494  
 or Visit Our Website

NC & VA BORDER  
 Mountain Views  
 Creek Side Cabins  
 High Mountain  
 Property Owned: Mountain Retreats

**www.TheHotelTavern.com**

336.846.2121

West Jefferson, NC

203 East 1st Street

LIVE MUSIC  
 OUTDOOR SEATING  
 FULL ABC PERMITS  
 PET FRIENDLY PATIO

**OLD BAR WINERY.COM**

FOLLOW US FOR EVENTS

ART & PAINTING - VIEWS  
 TASTINGS - LIVE MUSIC  
 FRIENDS - FAMILY - FARMING

West Jefferson

2032 BEAVER CREEK SCHOOL RD

OPENING

SUMMER 22

**The Old Store**

STEP INTO HISTORY  
 BUILT IN 1900  
 REOPENED 2022

U-PICK BLUEBERRIES | FARM FRESH CHRISTMAS TREES  
 GIFTS | LOCAL FOODS | CRAFTS

700 GRASSY CREEK ROAD, GRASSY CREEK, NC 28638  
 (813) 884-4820 | THEOLDSTORENC.COM

**ASHFORD COUNTY CHEESE**

See Cheese Made!

106 East Main Street Downtown West Jefferson  
 336-246-2501 | AshfordCountyCheese.com  
 HOURS: MON-SAT 8:30-5:00

**Gifts They will Use!**

SEASONINGS - FINE TEAS  
 SUGARS - SALTS - SPICES - HERBS

DOWNTOWN WEST JEFFERSON | 336.846.8327  
 Portions of The Spice, Herbs, Blends, Salts, Teas

*The Spice & Tea Exchange*

**THE HONEY HOLE**

Local & Imported Honey  
 100% Beeswax Candles  
 Exceptional & Unique Gifts

6 N. Third Avenue  
 West Jefferson NC 28694  
 (336) 846-BEES  
 856-213-8800  
 www.the-honey-hole.com

**SHOCK MOUNTAIN BARBECUE**

"We will serve no swine before its time"  
 Whole Hog Barbecue  
 Old Fashioned Country Cured Hams  
 Pig Pickings - Catering

1008 S Jefferson Ave - West Jefferson  
 246-6818

**Planning Your Visit to a Choose & Cut Farm**

*Be prepared for an adventure!*

Make sure you wear proper clothing, especially foot wear. If you plan to cut your own tree, bring gloves. Many farms offer refreshments, but not all. Have water on hand. Also consider that not all farms have restrooms.

*Be aware of your surroundings...*

Many farms try to keep their fields well-groomed, but it is an outdoor adventure, which means there will be stray tree stumps or blackberry vines or even ant hills. In Ashe County, the most popular tree variety is the Fraser Fir. Fraser Firs grow best on a slope, so be prepared to walk on an incline.

*Become familiar with the farm...*

All farms are different. Some will cut the tree for you, others may expect you to cut the tree yourself. Some will charge you by the foot while others by the individual tree. Not all farms take credit cards so bring cash. Call ahead or visit the farm's website to learn more about the one you are going to visit.

*Be ready for more fun and adventures...*

Ashe County has so many wonderful restaurants, shops, galleries and places to stay. To plan your adventure in Ashe County, visit

[www.AsheChamber.com](http://www.AsheChamber.com)

**Looking for the Perfect Christmas Tree?**

You'll find it in Ashe County—The Coolest Corner of North Carolina!

Ashe County grows more Christmas trees than any other county in the United States. Our farmers have carefully cultivated Christmas trees on family-owned farms for generations. We are proud of our Christmas trees and we are proud of our farming heritage.

We'd like to share both with you. Visit us in Christmas tree country... Ashe County, North Carolina

**Frosty's Choose & Cut**

2152 Beaver Creek School Rd - West Jefferson, NC

[www.GoFrostys.com](http://www.GoFrostys.com)

**VISITS FROM SANTA**

**FOOD TRUCKS, COFFEE BUS, & HOT COCOA!**

**A FAVORITE FAMILY TRADITION**

**Choose and Cut**

**2023 Christmas Tree Guide**

Ashe County  
The Coolest Corner in NC



**🌲🌲 Cline Church Nursery, Inc.**  
**Open ~ Black Friday through Mid-December, Monday-Saturday**  
**Features ~** Cline Church Nursery has been in business since 1977. We are located in Fleetwood, NC alongside the historic New River, just inside Ashe County on the crest of the Blue Ridge Mountains. At our retail garden center we offer our own fresh cut Fraser Fir, handmade greenery and live Christmas trees. The Christmas Market at Cline Church Nursery starts Black Friday! Open Monday thru Saturday.  
**Directions ~** We are located on US Hwy 221 South on the right just before the New River in Fleetwood – just 4 miles from the 421 intersection.  
**Cline and Ellen Church • 160 Hewed Log Gap Road Fleetwood, 28626 • 336-877-4237 • clinechurchnursery@gmail.com**

**🌲🌲 Davis Tree Farm**  
**Open ~ Nov 18–Dec 24 • Mon-Sat ~ 10am-5pm • Sun ~ 1pm til dusk**  
**Features ~** We have Fraser Fir Christmas trees of all sizes. Handmade wreaths in various sizes and shapes (crosses, Christmas trees, etc.). We accept pre-orders and can have the tree cut and baled for quick pick-up. Pre-tagging in late summer or early fall.  
**Directions ~** From West Jefferson, take Hwy. 194 N to Warrensville and on to Lansing. Turn right at 3 way stop to continue on Hwy. 194 N. Go approximately ½ mile, turn right on Piney Creek Road (at old Lansing school). Go approx. 1.5 miles, farm is on right.  
**Glenn Davis • 1620 Piney Creek Rd, Lansing, 28643 336-384-3388 or 336-957-7265 • davisnc@skybest.com**

**🌲🌲 Frosty's Choose-n-Cut**  
**Open ~ Nov 17th • Fri ~ 3-6pm • Sat ~ 9am-6pm • Sun ~ 12-6pm**  
**Features ~** Live music, Santa, call for schedule. Build a wreath station, hay rides, live nativity, bonfires, refreshments, restrooms, and Christmas shop. We have Fraser Fir Christmas trees of all sizes, including “snow-kissed” Fraser Fir. Handmade wreaths and roping. Tree baling. Tours by appt. Mail order available. Pre-tagging starting Jan. 1st.  
**Directions ~** From NC Hwy. 221 N, turn left at NC Hwy. 163/Hwy. 194 intersection. Take first left at next light on Beaver Creek School Rd. Travel approx. 2.5 miles, Frosty’s will be on right.  
**Andrew, Matthew & Thomas Sexton • 2152 Beaver Crk Sch Rd, West Jefferson, 28694 • 800-238-TREE • frosty@gofrostys.com • www.GoFrostys.com**

**🌲🌲 Ivy Point Farm**  
**Open ~ Nov 17-Dec 15 • Fri-Sat ~ 10am-4pm • Sun ~ 12-4pm**  
We offer Fraser Fir Christmas trees (all sizes) and handmade wreaths. NC designated Century Farm—our farm was founded in 1905. Pre-tagging starting in August (tag your tree and visit our u-pick raspberry and blueberry fields). Norway Spruce available for B&B. Refreshments and restrooms. Animal displays.  
**Directions ~** From NC Hwy. 221 N, turn left at NC Hwy. 163/Hwy.

194 intersection. Take first left at next light on Beaver Creek School Rd. Travel approx. 2 miles. Our farm is on both sides of the road.  
**James & Kathy Barlow • 1789 Beaver Creek School Road, West Jefferson, 28694 • 336-846-2470 or 336-877-7450 • jbarlow@skybest.com**

**🌲 Lil' Grandfather Tree Farm**  
**Open ~ Nov 24-27, Dec 1-4 • Fri-Sat ~ 9am to dark • Sun ~ 12pm to dark**  
**Features ~** Horse rides, hay rides, hay bale movie theater, Santa, refreshments, vendors with crafts, and restrooms.  
We have Fraser Fir, White Pine, Concolor Fir, Canaan Fir, Exotic Fir, Korean Fir and Turkish Fir. Handmade wreaths, roping, and tree stands. We machine shake, drill, and bale. B&B also available. Trees over 15’ by appt.  
**Directions ~** From Winston Salem, take Hwy. 421 N towards N. Wilkes. Turn right on Exit 282, turn right onto Hwy. 115. Travel 3 miles and turn left on Hwy. 18 N. at Wendy’s. Travel 18.3 miles ‘up the mountain’. Lil’ Grandfather is the first Christmas tree farm on right.  
**Buddy & Della Deal • 15371 NC Hwy 18 S., Laurel Springs, 28644 • 336-372-9613 • info@lilgrand.com • www.LilGrand.com**

**🌲 Long's Choose & Cut Christmas Trees**  
**Open ~ Nov 18-19, Nov 23-26, Dec 2-3, Dec 9-10 • 9am-5pm**  
**Features ~** Frosty the Snowman, restrooms, and ATV rides available to different areas of the farm.  
We offer Fraser Fir and White Pine Christmas trees (various sizes), handmade wreaths, roping, and tree stands. We will cut, trim, drill, bale, and load your tree. Visit our website for a coupon. Watch for the 55 foot Snowman!  
**Directions ~** From Wilkesboro, take Hwy. 16 N. to Glendale Springs. After passing the Blue Ridge Parkway, farm is 2 miles on the right.  
**8306 NC Hwy. 16 South, West Jefferson, 28694 • 336-846-5261 • info@longstreefarm.com • www.LongsTreeFarm.com**

**🌲🌲 Lyalls Nursery**  
**Open ~ Nov 11 – Dec 24 • Mon - Sun ~ 9am - 6pm**  
**Features ~** Refreshments, snacks, and restrooms.  
We have Fraser Fir and Colorado Blue Spruce Christmas trees (various sizes), wreaths, roping, and tree stands. We will cut, trim, drill, bale, and load your tree. Our farm is on level ground, so walking is easy. If the weather is bad, you can pick a tree from your vehicle. Pre-tagging starting Oct 1st.  
**Directions ~** From intersection of Hwy. 221/Hwy. 163. Take Hwy. 163 approx. 0.6 mile and turn left on Mt. Jefferson Rd. Go approx. 0.3 mile, turn right on Sexton Rd. Go approx. 300 ft. and turn left on Mt. Valley Dr. Farm on the right.  
**Eddie & Shannon Lyalls • 238 Mt. Valley Dr., West Jefferson, 28694 • 336-846-7516 or 336-977-0067 • lyallstrees@skybest.com • www.LyallsTrees.com**

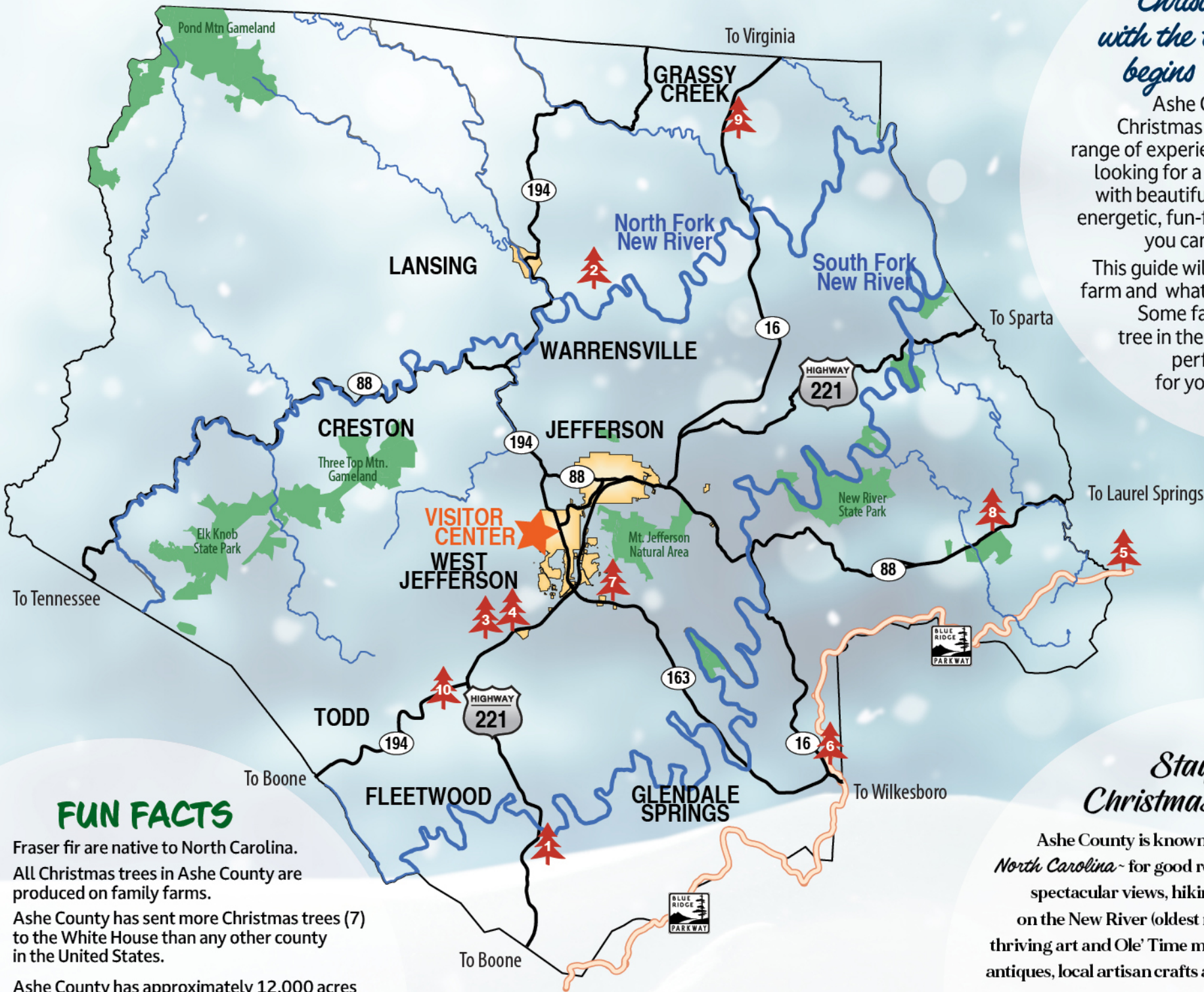
**🌲🌲 Mistletoe Meadows**  
**Open ~ Nov 18 & 19, 22, 24-26; Dec 2 & 3, 9-10 • 9am to dark or by Appt**  
**Features ~** Hay rides, refreshments, tours, visits from Santa, live demonstrations and restrooms.  
From our fields to your family... We are an award-winning small family farm that primarily grows Fraser fir, a beautiful tree native to the NC mountains. In our little part of the world, we like to say ‘we’re farm to family’. Each of our trees is trimmed and tended by hand with one goal in mind - to be the tree that your family chooses for Christmas this year. We handcraft a variety of wreaths and garlands. We also grow White Pine, Canaan Fir, Colorado Blue Spruce, Concolor Fir, Korean Fir, Leyland Cypress, Norway Spruce and Turkish Fir.  
**Directions ~** From Winston Salem, Take Hwy 421 N to Wilkes. Take Hwy 16 N (25 miles). Turn right on Hwy 88 E for 8 miles. Turn left onto Mistletoe Meadows Pkwy (gravel road with big sign) and follow to Choose & Cut barn. From Charlotte: Take I-77 N to Exit 73B to Wilkes and follow as above.  
**Joe Freeman • 270 Mistletoe Meadows Pkwy, Laurel Springs, 28644 • 336-982-9754 or 336-465-9754 • mistletoem@skybest.com • www.MistletoeMeadows.com**

**🌲🌲 The Old Store at Grassy Creek**  
**Open ~ Nov 17th to December 9th • Everyday 9am-5pm**  
We offer pre-cut Fraser Fir Christmas trees and wreaths straight from our farm. Enjoy our historic store filled with unique, local gifts perfect for the holidays.  
**Directions ~** From Jefferson, NC, take Hwy 16 north to VA state line. Turn right onto Grassy Creek Road, follow the road up and over the hill, back into NC, past the churches to the intersection with Old Hwy 16. We are on the corner.  
**The Old Store at Grassy Creek • 710 Grassy Creek Road, Grassy Creek 28631 • 336-384-1220 or 336-384-9603**

**🌲🌲 Wayland's Nursery**  
**Open ~ Nov 11 - Dec 23 • Mon-Sun, 9am-5pm**  
**Features ~** Gift shop, refreshments, and restrooms.  
We have Fraser fir, Concolor Fir and White Pine Christmas trees in various sizes up to 8 feet tall. Wreaths, roping, tree stands, tree drilling, net bagging, and tree baling. Specialty wreaths available for pre-order. Pre-tagging Sept 1. Tours by appt. Gift shop with homemade gifts.  
**Directions ~** From Wilkes Hwy. 421 N. turn right on Hwy. 16 N. Go to top of the mountain, turn left on Hwy. 163. Travel 5.5 miles to Boggs Rd. (on right). Travel 3 miles to Cox Rd. and turn left. Travel 0.5 mile to Round Knob Church Rd. and turn left. Travel 1/4 mile to Round Knob Ridge Rd., turn right and bare right. Signs posted.  
**Wayland & Andrew Cox • 1003 Round Knob Ridge Rd., West Jefferson, 28694 • 336-977-1586 or 336-309-9436 (Andrew) • wecox50@skybest.com**

- 🌲 Pre-tagging permitted
- 🌲 Pre-cut only

Learn more about Ashe County Christmas trees  
[www.AsheCountyChristmasTrees.com](http://www.AsheCountyChristmasTrees.com)



*Christmas begins with the tree and the tree begins in Ashe County!*

Ashe County Choose and Cut Christmas tree farms offer a wide range of experiences. Whether you are looking for a small, peaceful setting with beautiful mountain vistas or an energetic, fun-filled family adventure, you can find it in Ashe County. This guide will help you locate a tree farm and what features are available. Some farms offer tagging your tree in the summer or fall so your perfect tree will be waiting for you when you visit during Choose & Cut season.

*Stay awhile in Christmas Tree Country!*

Ashe County is known as ~ *the coolest corner of North Carolina* ~ for good reason! Ashe County offers spectacular views, hiking trails, fishing, canoeing on the New River (oldest river in North America) to thriving art and Ole' Time music scene to shopping for antiques, local artisan crafts and home-grown goodies.

## FUN FACTS

- Fraser fir are native to North Carolina.
- All Christmas trees in Ashe County are produced on family farms.
- Ashe County has sent more Christmas trees (7) to the White House than any other county in the United States.
- Ashe County has approximately 12,000 acres of Christmas trees in production amounting to approximately 20 million trees.